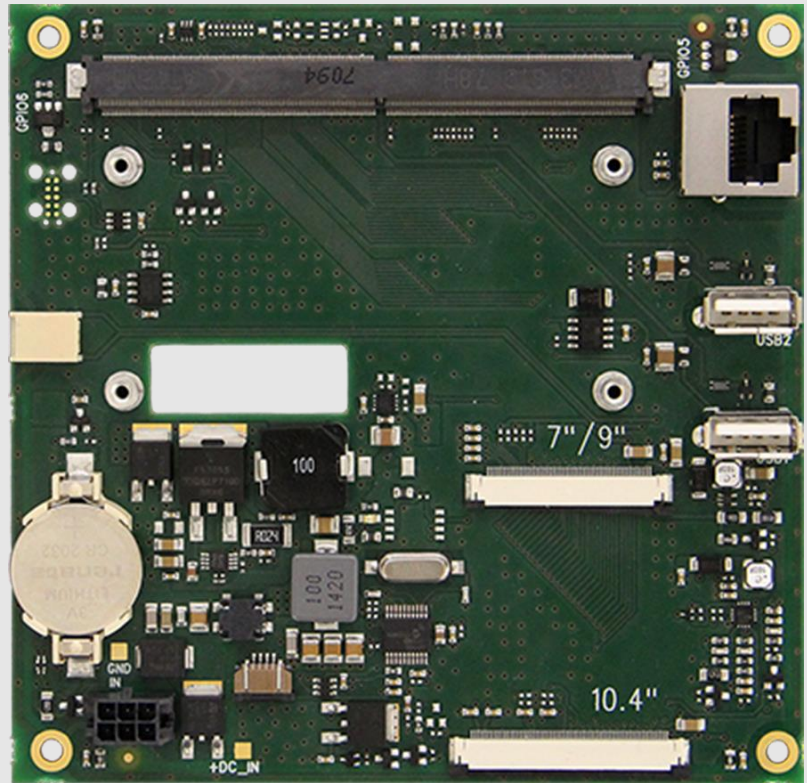


# EZ-ROJ-20

Graphic terminal carrier board for SMARC modules.



innovation through creativity

The industrial designed EZ-ROJ-20 is a low cost carrier board designed for EZ-ROJ-1 SMARC module suitable for HMI application. The Roj development kit includes HW boards, LCD and cables, but also includes the Roj-customized API, utility & source codes, including QT™ basic project (time/date setup, touch calibration, application SW update via USB host). The complete host Linux environment “ready to use” is available through a virtual machine disk image for Oracle™ VM VirtualBox.



# ROJ

## SPECIFICATIONS

<b>SMARC module</b>	compatible with EZ-ROJ-1
<b>Dimensions</b>	120 x 118 mm
<b>Video</b>	WVGA 800x480 24bpp for Tianma displays: 7" TM070RDH13 9" TM090RDSG01 SVGA 800 x 600 24bpp for Tianma 10,4" TM104SDHG30
<b>Backlight</b>	Led string driver 10V @ 180mA or 10V @ 240mA
<b>Touch Screen</b>	Resistive 4 wire integrated via AR1100 controller
<b>Communication</b>	Ethernet port 10/100Mbit RJ45connector CAN 1 port USB 2 Host port High-speed
<b>RTC</b>	PCF8536T Battery on socket (CR2032)
<b>Power supply</b>	+24VDC +/- 20%, Max 25W
<b>Temperature</b>	0 °C ~+ 45 °C operating - 25°C ~ + 85°C storage
<b>SW</b>	BSP customized for EZ-ROJ-1 HMI application

